



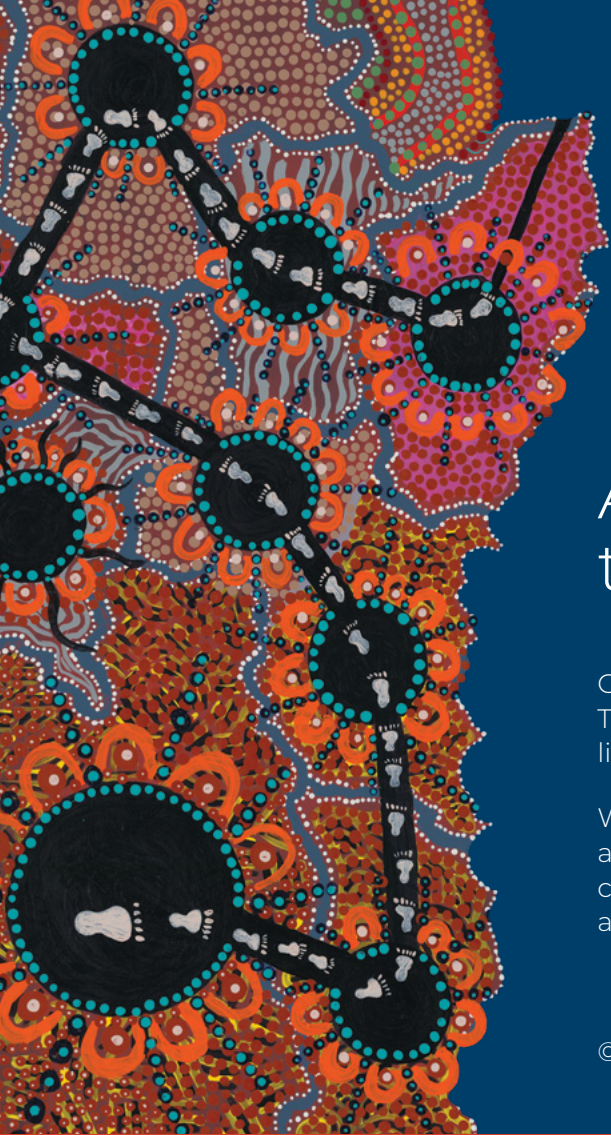
Expression of interest **Aboriginal Artist**

**Women's Business, Women's Way
- A Health Screening Program**

Due: 5:00pm Wednesday 3 September 2025

EOI Reference No: EOI-2526-01





Acknowledgement to Country

COORDINARE - South Eastern NSW PHN acknowledges the Traditional Owners and Custodians of the lands across which we live and work.

We pay our respects to Elders past, present and emerging, and acknowledge Aboriginal and Torres Strait Islander peoples' continuing connection - both physical and spiritual - to land, sea and sky.

© Artwork by Loretta Parsley

Contents

1. Introduction	3
2. Who can apply?	4
3. Background & Funding purpose	4
4. Scope and specifications	5
5. Activities out of scope	5
6. Timeline	7
7. How to apply	8
8. How to contact us	9
9. Evaluation of submission	10
10. Contract arrangements	11
11. Project Governance	11



Introduction

COORDINARE, as the South Eastern NSW Primary Health Network, is dedicated to fostering healthier communities. We focus our efforts on those who face the biggest inequities. To do this, we collaborate with the community, general practices and other stakeholders to design solutions that make it easier for people to get the health care they need.

> **More information about COORDINARE – SENSW PHN can be found on our [website](#).**

COORDINARE is inviting Aboriginal women artists to apply for funding and be part of a women's business health project.

As part of this program, you'll take part in yarning sessions with other women and create an artwork inspired by the stories and experiences shared.

Your artwork will feature in a campaign to help raise awareness and start conversations in our communities about the importance of cervical screening for Aboriginal women.

There is funding of **up to \$15,000 ex GST** for 6 months from contract commencement.





Who can apply?

This process is what COORDINARE calls an 'Open Expression of Interest' (EOI).

What this means is that any Aboriginal female artists who live on or have cultural and community connections to Country in the Greater Illawarra or Shoalhaven Region can apply.

Only one proposal will be selected to be part of the project. You are welcome to submit a proposal that includes more than one artist.

Both individuals and organisations are encouraged to apply. For team submissions, one artist must be designated as the project lead.

You do not need to have an ABN or be registered for GST to apply.

Background & Funding purpose

Across the country, less than half of Aboriginal and Torres Strait Islander women are having their cervical screening done, compared to about two-thirds of non-Indigenous women. Because fewer Aboriginal women are getting screened, more are getting sick with cervical cancer. This also means that more Aboriginal women are dying from cervical cancer — almost four times more than non-Indigenous women. Closing this gap is so important to keeping women strong and well and looking after the health of their families and communities.

The Illawarra and Shoalhaven regions have the largest Aboriginal communities in the South Eastern NSW PHN region. This is why these places have been chosen.

As part of this project Aboriginal women will come together to talk about cervical screening. Through yarning and storytelling, a female Aboriginal facilitator will guide the way to understand and shape culturally safe approaches.

The selected artist(s) will participate in the yarning circles, listening to the stories and wisdom shared, and will create an artwork that reflects these voices. This artwork will become the heart of a campaign to raise awareness and start conversations about cervical screening in community.

The artwork will feature in campaign advertising and be printed on merchandise to support community engagement. These items will be used during promotional activities and shared with women at community events and health screening days to help spread the message in a meaningful and respectful way.



Scope and specifications

The successful applicant must:



Be comfortable hearing and translating discussions about Women's Business, (specifically cervical screening) into art.



Attend the 3 yarning circles.



Create an original artwork that captures key themes from the yarning circles (e.g. women's strength, cultural knowledge, health, connection). The artwork must not infringe on third-party intellectual property.



Understand that the artwork will be digitised, to allow COORDINARE to use it across multiple platforms. Because of this, the completed artwork must be developed in print (e.g. painting or sketches) and be no smaller than 42cm x 60cm and no larger than 90cm x 120cm. Mixed-media artwork, or three-dimensional formats such as sculpture, will not be suitable.



Provide a short artist statement explaining the story and cultural significance of the artwork.



The total funding includes all costs needed to complete the work in this Expression of Interest. This includes things like artist fees, travel, accommodation, materials, labour, equipment, and anything else required to deliver the project.



Grant copyright of the original artwork to COORDINARE.



Grant exclusive rights to COORDINARE and Cancer Institute NSW for use of and the commercialisation of the artwork, including but not limited to campaign materials, merchandise, and promotional activities related to this project and general COORDINARE activities including but not limited to social media, website, publications and promotional products. The artist will be appropriately credited wherever used.



Cultural ownership will be respected and maintained.



Activities out of scope



The artist is not expected to provide cervical screening education or clinical advice to participants. Health promotion and screening discussions will be facilitated by trained health workers and project staff.



While the artist will attend and listen during yarning circles, they are not responsible for facilitating or leading the sessions. This role will be held by a cultural facilitator.



The artist is not expected to design campaign materials (e.g. flyers, posters, social media assets). A professional graphic designer will adapt the artwork for use across campaign materials.



The artist is not responsible for sourcing, printing, or distributing campaign merchandise. This will be managed by the project team.



While reasonable consultation is expected, the artist is not expected to make multiple revisions or alternate versions of the artwork beyond the agreed deliverables.



Timeline

An indicative timeline is outlined below. COORDINARE reserves the right to modify these time frames. Any changes to this EOI will be notified via email.

Activity	Date
EOI released	▶ 7 August 2025
Online yarn for people to ask questions about this project Registration for this session via link here: Online yarn for Women's Business, Women's Way: A Women's Health Screening Program. This session will be recorded and published on COORDINARE website.	▶ 18 August 2025 12:00 pm to 12:45 pm
Closing date and time for applications	▶ Wednesday 3 September 2025 - 5.00pm
Evaluation of EOI	▶ September 2025
Clarification / negotiation with shortlisted providers	▶ September 2025
Funding awarded	▶ September 2025
Contracts commence	▶ September 2025
Yarning circles	▶ Between October & December 2025
Artwork submitted to COORDINARE	▶ No later than 31 March 2026

Please note that any questions, answers, and points of clarification may be shared with publicly (your questions will be deidentified).



How to apply

We'd love to hear from you in the way that feels most comfortable and right for you.

You have 3 options for sharing your response:



You can download and fill out the **written EOI Application Form** and include anything else that helps explain your ideas or your artwork. You can email the completed **Application form** to commissioning@coordinare.org.au

File formats accepted: word, excel, pdf and jpg files are all acceptable formats. If the documents are large please specify the relevant page number(s)/section(s) to your response.



You can complete an online Application form on our website. Your progress will not be saved if you close the window or refresh the page. We recommend completing the application in one session. **OR**



You can send us a short video, where you talk us through your responses and show us your art or creative ideas. You may use any of the following platform to upload your video:

Online storage platforms such as OneDrive/ Google Drive/ Dropbox.

YouTube (unlisted or private link recommended for security).

Ensure the link is publicly accessible or set with appropriate permissions so we can view it.

- ▶ For Google Drive/OneDrive/Dropbox, make sure the sharing settings allow anyone with the link to view.
- ▶ For YouTube, set the video to Unlisted so it's not publicly searchable but still accessible via the link.

You can submit the video link via [Application Form](#) or send the video link to email address: commissioning@coordinare.org.au. COORDINARE will not share your video link with any third parties, other than the project team and evaluation panel members of this project.



Please take your time reading through the questions and make sure your application matches the scope and specifications on page 5 in this document. Please also make sure you respond to all the assessment criteria in page 10 of this document.

All responses will be looked at fairly by a small independent panel of Aboriginal women who are here to support this important, community-led work.

Please submit your response by 5:00pm (AEST) on Wednesday 3 September 2025. To be fair to everyone who applies, **submissions submitted after cut-off date and time will not be considered.**

How to contact us

For any questions regarding this process
please email Commissioning Business Team
at commissioning@coordinare.org.au



Evaluation of submission

Submissions will be assessed via a competitive process. This means each submission will be looked at fairly and checked against the same set of criteria to see which one best fits the project. Each submission will be assessed against the Assessment criteria below:

1.

Cervical screening is part of women's business. What does it mean to you to represent women's business through art?

2.

How would you make sure your artwork speaks to mob — in a way that feels right, safe, and meaningful?

3.

Can you please provide us with an example of an artwork you have created and tell us the story behind the art.

Please note that COORDINARE will not use or share this artwork outside of this application. It will be used only so the assessment panel can get a feel for your work.

The assessment will be done by an independent evaluation panel made up of Aboriginal women.

COORDINARE may request additional information from respondents. COORDINARE may also work with shortlisted respondents to clarify submissions, prior to awarding a contract.



Contract arrangements

Successful applicants will be required to enter into a grant agreement with COORDINARE. The term of the contract awarded will be from the date of execution until 30 March 2026.

Staged payments will be made to the artist(s) in accordance with the following project milestones as specified (negotiable):

- ▶ On signing of the contract - 30% of total contract value.
- ▶ Final artwork design approval: 30% of total contract value.
- ▶ Final artwork received by COORDINARE: 40% of total contract value.

Project Governance

COORDINARE is committed to ensuring all participants feel safe, supported and respected during this project.

This project will be Aboriginal-led internally, guided by COORDINARE's Aboriginal Health Consultants.

An Aboriginal-led working group will be established to guide the design and delivery of the project. This group will include representatives from:

				
Community	Aboriginal Community Controlled Health Organisations (ACCHOs)	Grand Pacific Health (GPH)	Local Health District (LHD)	COORDINARE

Community yarning circles will be central to the engagement process. These will be:

- ▶ Facilitated by a female Aboriginal cultural facilitator
- ▶ Supported by Aboriginal Health Workers, Practitioners, or Aboriginal Nurses to ensure cultural and clinical safety
- ▶ Supported by a female Aboriginal health professional who can provide emotional and social wellbeing support to community on the day
- ▶ Held in community settings to ensure comfort and easy access.

If there is anything you need from COORDINARE to help, make this a safe and meaningful experience for you and the community you can make a note on your application form.

[Visit the website for more information and to download the form](#)