

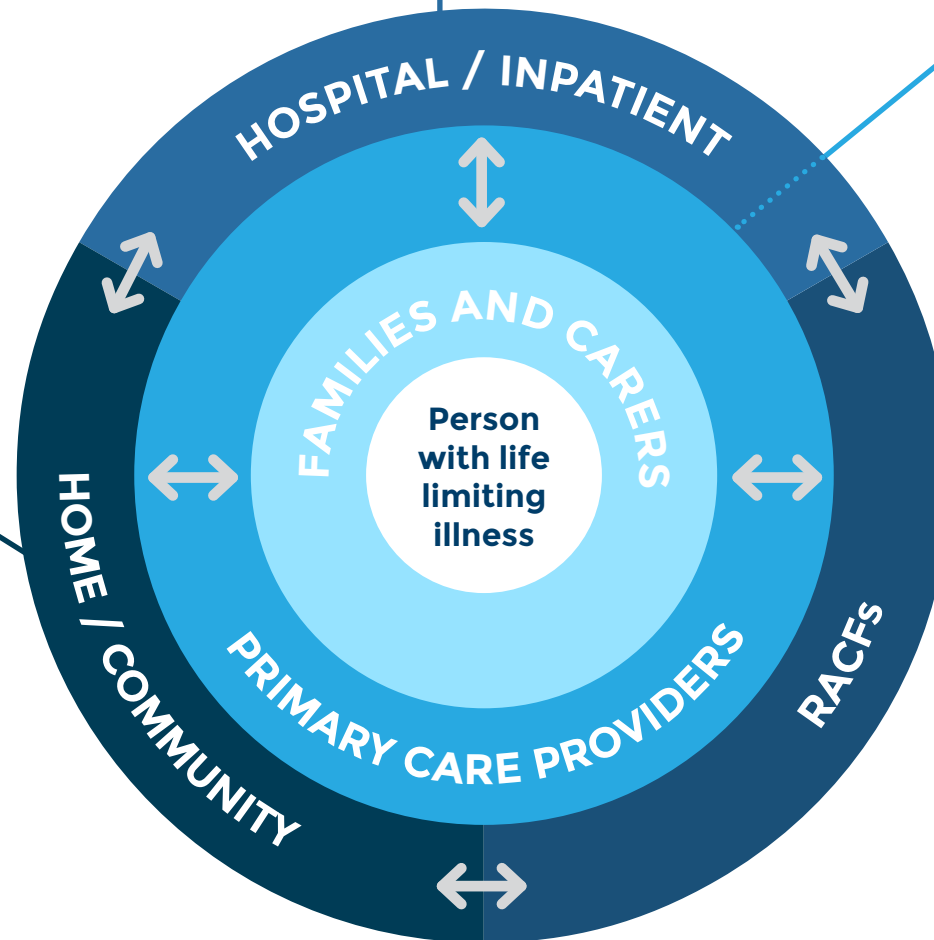
# Palliative and end-of-life care provision in Illawarra Shoalhaven

↔ These arrows represent key transition points for patient care and interactions between care providers, including for assessment and referral, inter-professional care planning, transfer of care and ongoing care management. Strengthening these interactions is critical to support coordination, continuity and communication of patient care.

## ISLHD

- Specialist inpatient beds
  - Port Kembla
  - Wollongong
  - David Berry
- Hospital specialist palliative care consults

- GPs
- Practice nurses
- Services for Aboriginal people, including Aboriginal Medical Services



- ISLHD specialist team outreach
- ISLHD primary health nursing
- ISLHD after hours support
- Ambulatory care services
- NSW Ambulance service
- NGO providers
- Allied health providers
- My Aged Care providers
- Hospice Care providers
- Palliative Care Home Support Package (PEACH) provider
- Counselling, bereavement and funeral services

- Residential aged care providers
- ISLHD specialist team support
- NSW Ambulance service
- Counselling, bereavement and funeral services