

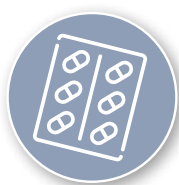


This pharmacy supports palliative care in the community **Our pharmacist is here to help.**



SUPPORT

Our pharmacists have been trained to provide support to people approaching end of life who choose to be cared for at home or in a Residential Aged Care Facility, as well as their families/carers.



MEDICATION MANAGEMENT

Our pharmacists are working with local doctors and other palliative care providers to ensure timely access to appropriate medicines to help manage the symptoms commonly experienced towards end of life.



ASSISTANCE

Our pharmacists are available to help you understand the important role of the medicines used to enhance quality of life for those you love.

If you need help with palliative care have a conversation with your pharmacist today.