

## Population

Total population  
**611,000+**



**19.4%**  
aged over 65 years

**15 million tourists**  
spend a total of  
**20 million nights**

Almost  
**21,100 (3.6%)**  
people identify as  
Aboriginal and Torres  
Strait Islander



**52.4%**  
people live in major cities

**37.7%**  
in inner regional areas

**9.8%**  
in outer regional areas

Low socioeconomic  
status:

**48%**  
Illawarra Shoalhaven

**39%**  
Southern NSW

**55,200+**  
culturally and  
linguistically  
diverse people

Projected population growth:  
**9.5%** between 2012-2026

## Health and aged care services

More than  
**655 GPs** **205 general practices**

**150+ aged care service sites**

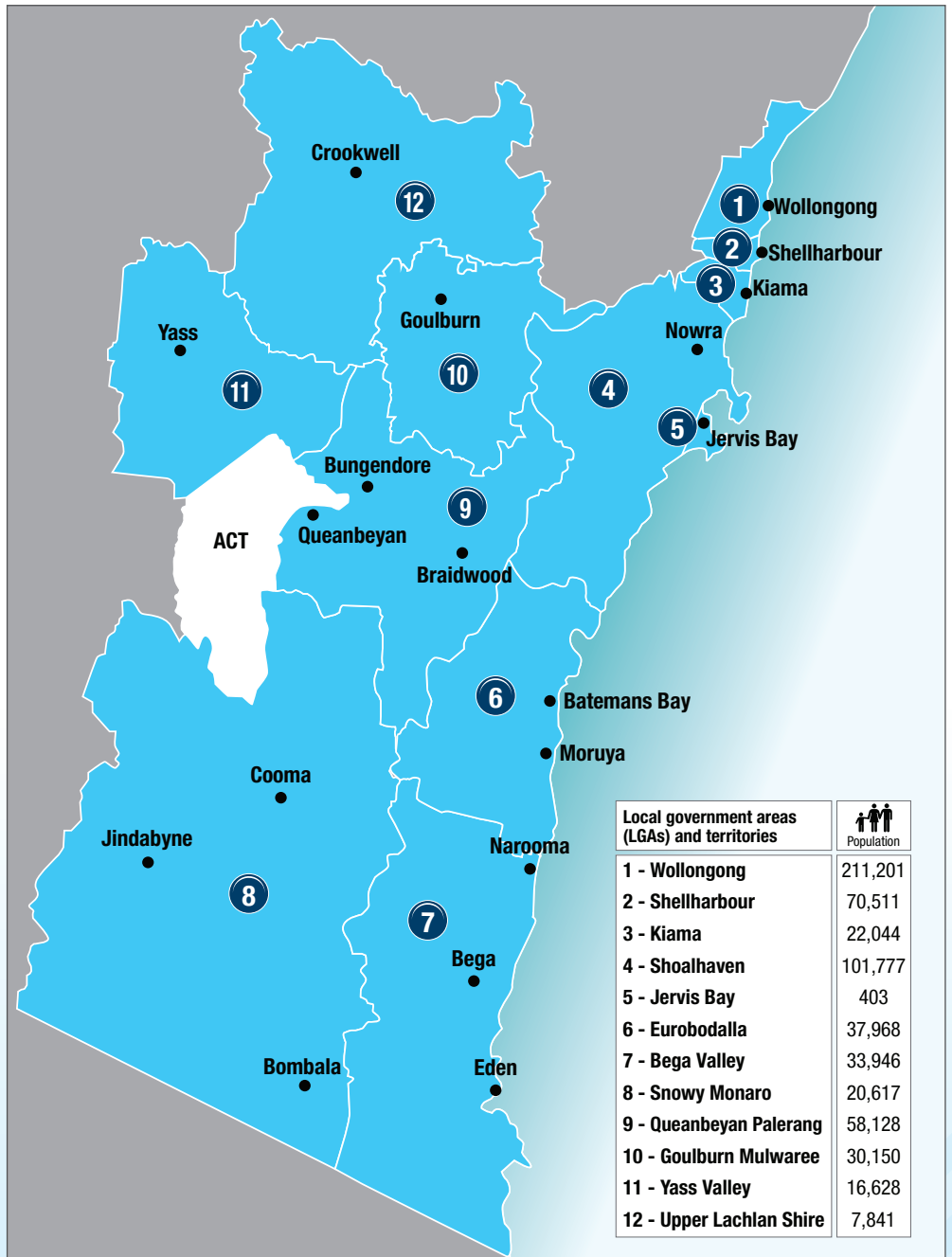
**22 public hospitals**

**16 emergency departments**

**34 community health centres**

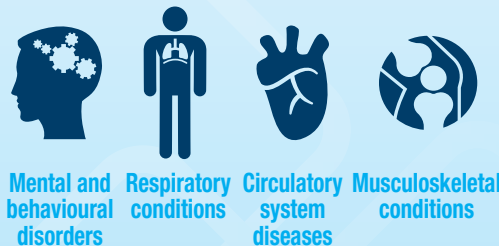
## Risk factors

Higher than NSW and Australian average prevalence figures for lifestyle risk factors amongst the adult population including:



## Morbidity

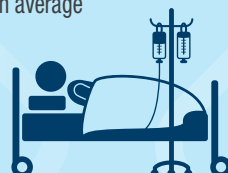
Higher than NSW and Australian average prevalence figures for chronic conditions including:



## Mortality

Higher than NSW and Australian average age standardised rates for:

- premature mortality
- potentially preventable deaths



## National headline indicators

### Annual childhood immunisation coverage

1 year	2 years	5 years
<b>94.3%</b> Australia 93%	<b>92.3%</b> Australia 90.7%	<b>94.7%</b> Australia 92.9%

### Annual cancer screening coverage (national screening programs only)

Cervical	Bowel	Breast
<b>56.9%</b> Australia 56%	<b>38.7%</b> Australia 35.1%	<b>53.9%</b> Australia 51.6%

### Potentially preventable hospitalisation rates per 100,000 population

Total	Chronic	Acute and Vaccine-Preventable
<b>2,292</b> Australia 2,643	<b>1,044</b> Australia 1,205	<b>1,259</b> Australia 1,456

**Mental health overnight hospitalisation per 100,000 people**  
**1,103** Australia 944